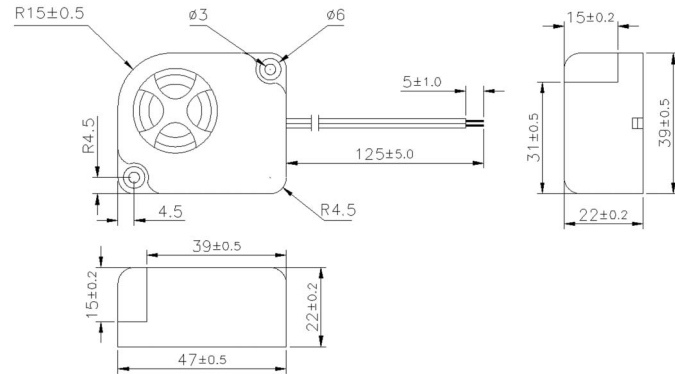




BPS-473W

Dimension Unit : mm Tolerance : $\pm 0.5\text{mm}$



Specifications

BPS-473W	
Rated Voltage	12VDC
Operating voltage Range	5~15VDC
Sound Pressure Level	105dB at 100cm at Rated Voltage
Current Consumption	150mA at Rated Voltage
Tone	Sweep $3.3 \pm 20\%$
Product Weight	90g
Operating Temperature	$-20 \sim +70$ °C
Storage Temperature	$-30 \sim +80$ °C