

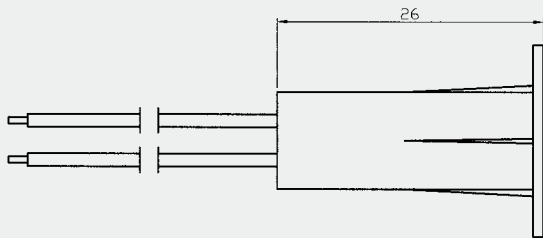
**Specification: BR-1018**

- \* Flanged recessed switch
- \* 3/8" diameter press to fit
- \* Standard 18" #22AWG leads
- \* Special wire available
- \* Switch and Magnet available seperately
- \* Resistor, Diode and Supervisory Loop available on request
- \* Colors: White, Brown, Grey

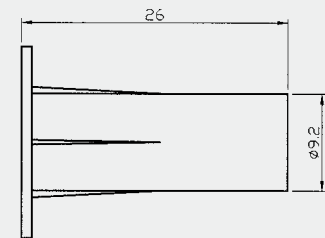
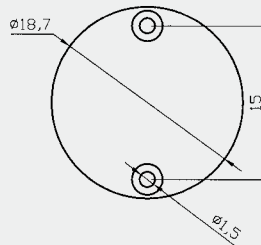
... Recessed Mounted



**Dimension (mm):**



SWITCH



MAGNET

**Order Information:**

Part Number	Loop Type	Reed Form	Closed Gap [Inch(mm)] (Ohm)	Depature Gap [Inch(mm)] (W)	Maximum Initial Contact Resistance (VDC/VAC)	Maximum Contact Rating (A)	Maximum Switching Voltage	Maximum Switching Current
BR-1018	Closed	N/O	3/4 (19)	0.78 (22)	0.150	10	100	0.5
BR-1018WG	Closed	N/O	1 (25)		0.150	10	100	0.5
BR-1018A	Open	N/C	3/4 (19)		0.150	3	30	0.2
BR-1018C	Closed & Open	SPDT	3/4 (19)		0.150	3	30	0.2

