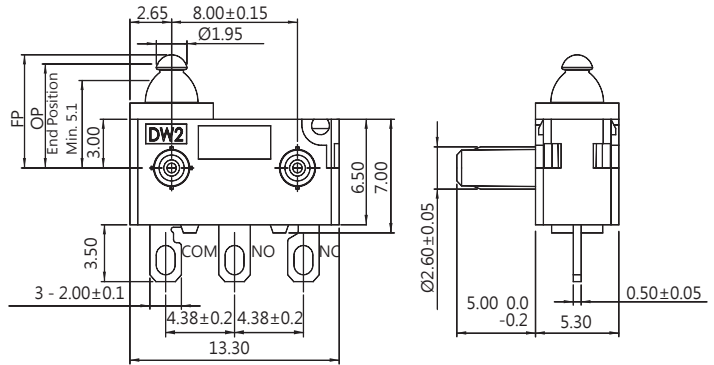


# WATER PROOF SWITCHES



## DIMENSIONS

Unless otherwise specified, a tolerance of  $\pm 0.4\text{mm}$  applies to all dimensions.



## DW2 SERIES

### SPECIFICATIONS

#### Contact Resistance ( initial )

Max. 100m $\Omega$

(Measured by ohm meter-Open Voltage < 1VDC, Driver current-100mA)

#### Insulation Resistance ( at 500VDC/minute )

Min. 100M $\Omega$

#### Dielectric Strength

Min. 500VAC(50-60HZ)/minute between Live parts.

Min. 1500VAC(50-60HZ)/minute between Live parts and dead metal parts

#### Operating Temperature Range

-40°C to 85°C ( with no icing )

#### Vibration

10~55Hz, displacement 0.75 mm (p-p)

#### Electrical Service Life

0.1A - Min. 100,000 operations

3A - Min. 10,000 operations

#### Electrical Operating Frequency

10~30 operations per minute

#### Mechanical Service Life

Min. 1,000,000 operations

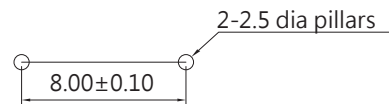
#### Mechanical Operating Frequency

120 operations per minute

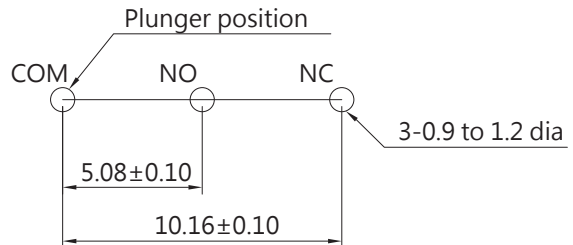
#### Operating application of the switch

Set the switch pushing distance from 60% to 90% of the specified OT value

### PILLAR PITCH



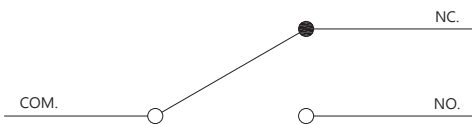
### MOUNTING HOLES FOR PCB TERMINAL



### APPLICATIONS

Automotive (Seat, Door Latch, Engine Hood, Door Truck),  
Air Conditioner, Communication, Security System,  
Electric tooth brush, Toy

### CONTACT CONFIGURATION

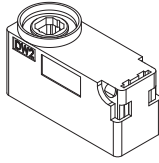


### CERTIFICATE INFORMATION

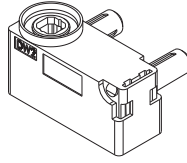
Model Name	UL, cUL	ENEC
DW2-03	0.1RA 3RA 12VDC $\mu$ T55 1E5 3RA 24VDC $\mu$ T55 5E4 0.1RA 3RA 125/250VAC $\mu$ T55 1E4	0.1A 3A 12VDC $\mu$ T55 1E5 3A 24VDC $\mu$ T55 5E4 0.1A 3A 125/250VAC $\mu$ T55 1E4
DW2-G3	0.1RA 3RA 12VDC $\mu$ T55 1E5 3RA 24VDC $\mu$ T55 5E4 0.1RA 3RA 125/250VAC $\mu$ T55 1E4	0.1A 3A 12VDC $\mu$ T55 1E5 3A 24VDC $\mu$ T55 5E4 0.1A 3A 125/250VAC $\mu$ T55 1E4

COVER TYPES ( PILLAR & TRAVEL TYPES )

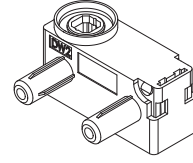
A TYPE



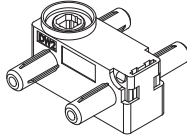
B TYPE



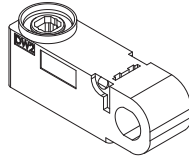
C TYPE



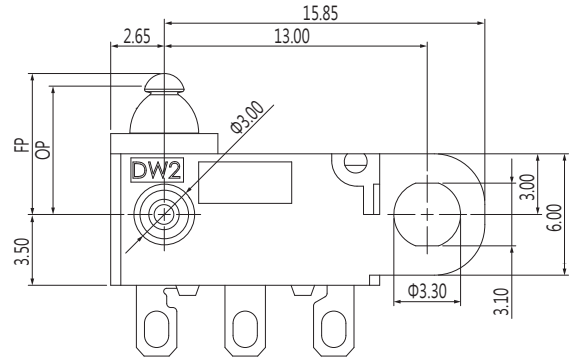
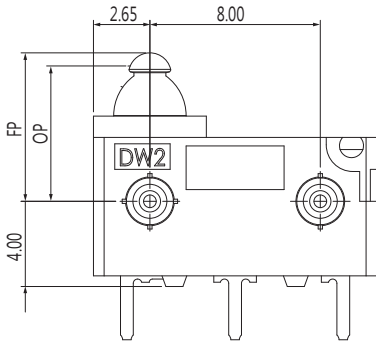
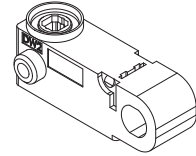
D TYPE



E TYPE



F TYPE



ORDERING INFORMATION



SERIES PREFIX

CODE	RATING CURRENT
G3	3A 125/250VAC (Contact Plated Gold)
03	3A 125/250VAC

CODE	OPERATING FORCE
S	STANDARD
H	HEAVY

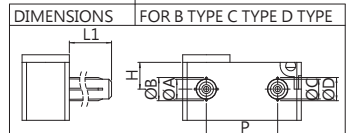
CODE	ACTUATOR TYPE
00	
01	
A01	

CODE	TERMINAL TYPE
A	
C	
D	
P	

CODE	CIRCUIT ARRANGEMENT
0	S.P.D.T
1	S.P.S.T.NO
2	S.P.S.T.NC

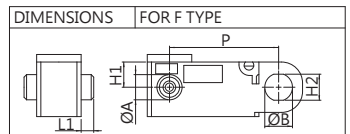
CODE	PILLAR TYPE
A	
B	
C	
D	

PILLAR TYPE      ROHS CODE



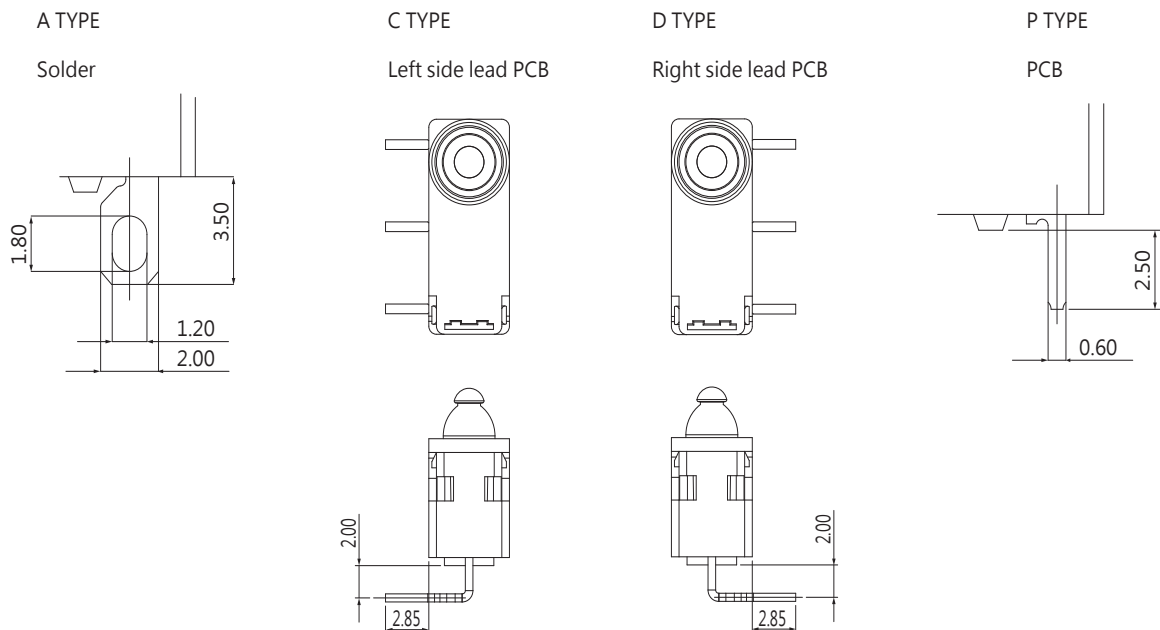
CODE	L1	H	ØA	ØB	ØC	ØD	P
	5.0	3.0	2.2	2.6	2.2	2.6	8.0
A	2.0	3.0	2.2	2.6	2.2	2.6	8.0
B	4.0	3.0	2.2	2.6	2.2	2.6	8.0
C	0.7	3.0	2.5	N/A	2.5	N/A	8.0

CODE	PILLAR TYPE
E	
F	



CODE	L1	H1	H2	ØA	ØB	P
	1.5	3.0	3.1	3.0	3.3	13.0

**TERMINAL TYPES (THE thickness of each terminal is 0.5mm)**



**OPERATING CHARACTERISTICS**

SWITCH TYPE	PART SUFFIX	OF		OP (mm)	EP Min (mm)	OT Min (mm)	MD Max (mm)	FP Max (mm)	RF Min (gf)
		Max (gf)							
DW2- □□ S-00 □□ -Z		S	95	10.4±0.2	9.1	1.1	0.25	11.2	10
		H	150						20
		S	95	6.4±0.2	5.1				10
		H	150						20
DW2- □□ S-01 □□ -Z		S	95	11.5±0.5	10	1.0	0.5	12.8	7
		H	150						13
		S	95	7.5±0.5	6				7
		H	150						13
DW2- □□ S-A01 □□ -Z		S	183	11.4±0.5	9.8	1.1	0.5	13.3	20
		H	220						38
		S	183	7.4±0.5	5.8				20
		H	220						38

## CAUTIONS:

### 注意事項

1. To secure the switch, please use an M3 small screw on a flat surface and tighten with plane washers or spring washers to securely mount the Switch, using a maximum torque of 0.29 N•m.  
若使用定位孔型式上蓋，請使用M3小型螺絲固定在平面上，並使用平墊圈或者彈性墊圈以便安全的鎖固開關，鎖固扭力請勿超過0.29 N•m.
2. Do not handle the switch in a way that may cause damage to the sealed rubber & switch sealing.  
使用開關時，請勿損壞開關防水矽膠罩及開關防水膠。
3. To ensure the best performance of the switch, when handling/installing the switch, please do not apply uneven pressure to the direction indicated by the arrow in Figure 1. Any uneven pressure or pressure direction other than the operating direction might be harmful or damage the switch performance.  
為確保開關正常運作，安裝及取用開關時，請勿直接施加壓力在圖-1中箭頭所指示的方向。如圖所示，任何不對稱的壓力或作動方向以外的壓力都不適用在開關按柄上。
4. Do not exceed the end position (EP) and over travel (OT). This could cause operation failure. (Figure-2)  
圖示設計按壓位置，請勿超過開關下死點及超出行程，以避免開關失效。(圖2)
5. Avoid applying any grease/oil and chemicals on the switch rubber.  
請避免沾附任何油脂或者化學物質在開關的矽膠防水罩上。

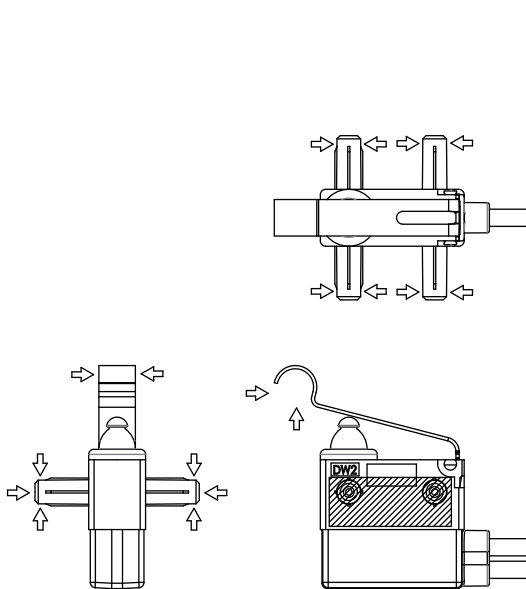


Figure-1

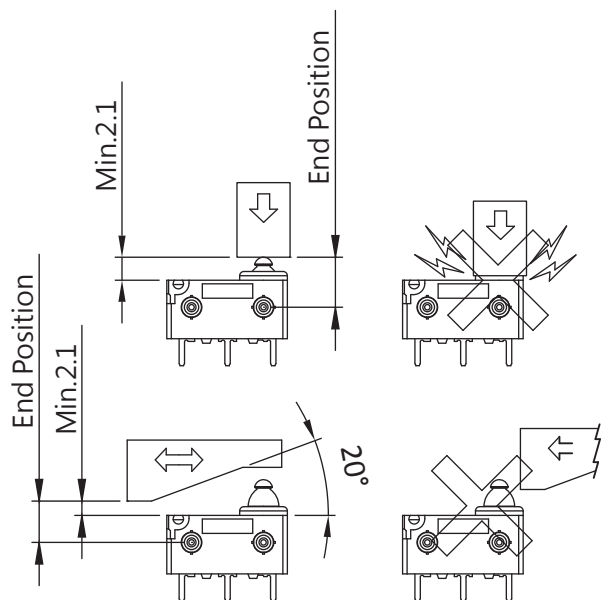


Figure-2