

# WATER PROOF SWITCHES



## DW2 SERIES

### SPECIFICATIONS

#### Contact Resistance ( initial )

Max. 100mΩ

(Measured by ohm meter-Open Voltage < 1VDC, Driver current-100mA)

#### Insulation Resistance(at 250VDC/minute)

Min. 100MΩ

#### Dielectric Strength

500VAC(50~ 60Hz)

#### Storage Temperature range

-40°C to 85°C (with no icing)

#### Operating Temperature range

-40°C to 85°C (with no icing)

#### Storage Humidity

at 40°C , Max. 85% R.H

#### Vibration

10~55Hz, displacement 0.75 mm (p-p)

#### Electrical Service Life

0.1A~3A 12VDC- Min. 100,000 operations

0.1A~3A 125/250VAC- Min. 10,000 operations

3A 24VDC - Min. 50,000 operations

#### Electrical Operating Frequency

0.1A-120 operations per minute

3A-10~30 operations per minute

#### Mechanical Service Life

Min.1,000,000 operations

#### Mechanical Operating Frequency

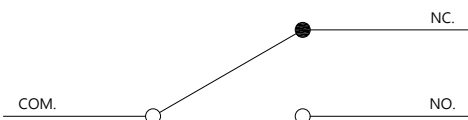
120 operations per minute

### APPLICATIONS

Automotive (Operation system, Engine area Interior)

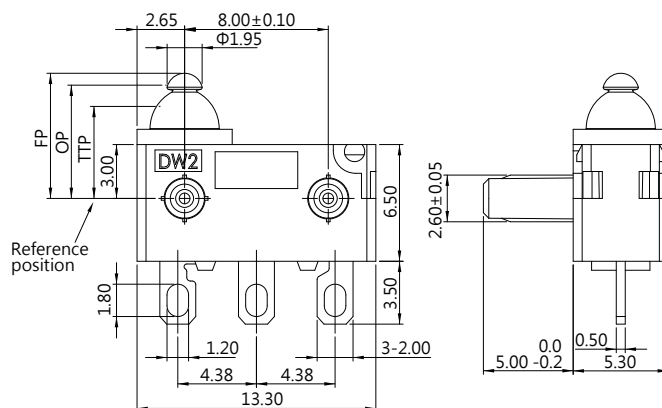
Air conditioner, communication, Electric tooth brush, toys

### CONTACT CONFIGURATION

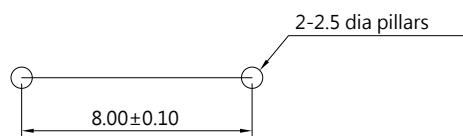


### DIMENSIONS

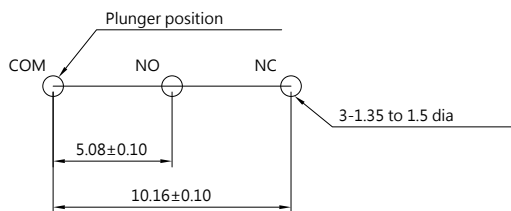
Unless otherwise specified, a tolerance of ±0.4mm applies to all dimensions.



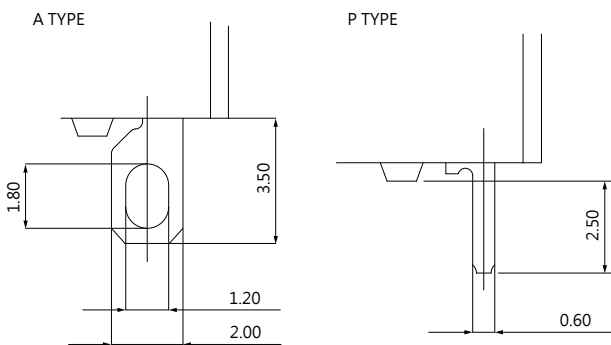
### PILLAR PITCH



### MOUNTING HOLES FOR PCB TERMINAL



### TERMINAL TYPES (THE thickness of each terminal is 0.5mm)

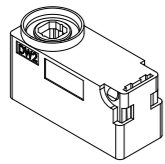


### CERTIFICATE INFORMATION

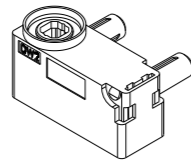
Model Name	cULus · ENEC15
DW2-03S	0.1A/3A 12VDC (Normal temperature)
	Min. 100,000 operations
	0.1A/3A 125/250VAC (Normal temperature)
	Min. 10,000 operations
DW2-G3S	3A 24VDC (Normal temperature)
	Min. 50,000 operations
	0.1A/3A 12VDC (Normal temperature)
	Min. 100,000 operations
DW2-G3S	0.1A/3A 125/250VAC (Normal temperature)
	Min. 10,000 operations
	3A 24VDC (Normal temperature)
	Min. 50,000 operations

COVER TYPES ( PILLAR & TRAVEL TYPES )

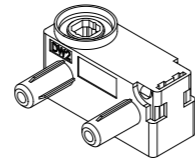
A TYPE



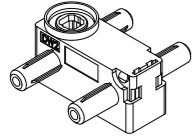
B TYPE



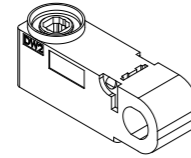
C TYPE



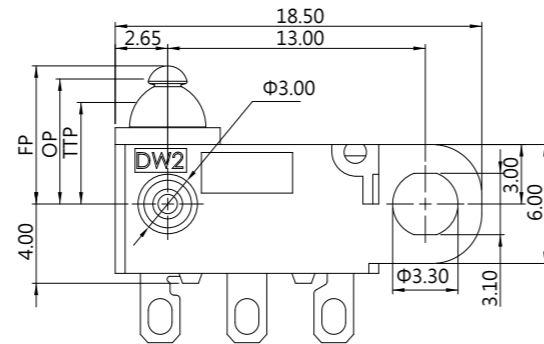
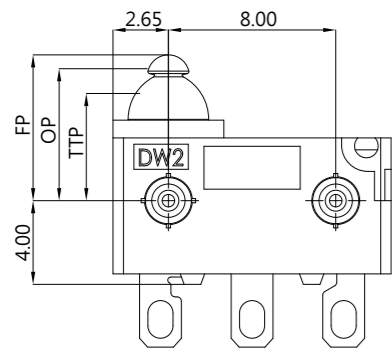
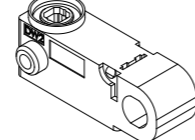
D TYPE



E TYPE



F TYPE



ORDERING INFORMATION

**DW2 - 03 S - 01 A 0 A A - Z**

<b>SERIES PREFIX</b>	<b>CODE</b>	<b>RATING CURRENT</b>	<b>CODE</b>	<b>OPERATING FORCE</b>	<b>CODE</b>	<b>ACTUATOR TYPE</b>	<b>CODE</b>	<b>TERMINAL TYPE</b>	<b>CODE</b>	<b>CIRCUIT ARRANGEMENT</b>	<b>CODE</b>	<b>PILLAR TYPE</b>	<b>SPECIAL CODE</b>	<b>ROHS CODE</b>
DW2	03	0.1A 12VDC Min.100,000 operations 3A 12VDC Min.100,000 operations 3A 24VDC G3 03 Min.50,000 operations 0.1A 125/250VAC Min.10,000 operations 3A 125/250VAC Min.10,000 operations	S	STANDARD	00		A		0	S.P.D.T	A			Z
					01		P		1	S.P.S.T.NO Only Terminal Type P	B			
					11				2	S.P.S.T.INC Only Terminal Type P	C			
											D			
											E			
											F			

**DIMENSIONS**

CODE	L1	H	ΦA	ΦB	ΦC	ΦD	P
A	2.0	3.0	2.2	2.6	2.2	2.6	8.00
B	4.0	3.0	2.2	2.6	2.2	2.6	8.00
C	0.7	3.0	2.5	無肋	2.5	無肋	8.00

OPERATING CHARACTERISTICS

SWITCH TYPE	PART SUFFIX	OF Max (gf)	OP (mm)	TTP Max (mm)	OT Min (mm)	MD Max (mm)	FP Max (mm)	RF Min (gf)
DW2- □□ S-00A0-Z		S 76	10.4±0.2	9.1	1.1	0.25	11.2	10
			6.4±0.2	5.1			7.2	
DW2- □□ S-01A0-Z		S 76	11.5±0.5	10	1.0	0.5	12.8	7
			7.5±0.5	6			8.8	
DW2- □□ S-11A0-Z		S 183	11.4±0.5	9.8	1.1	0.5	13.3	20
			7.4±0.5	5.8			9.3	