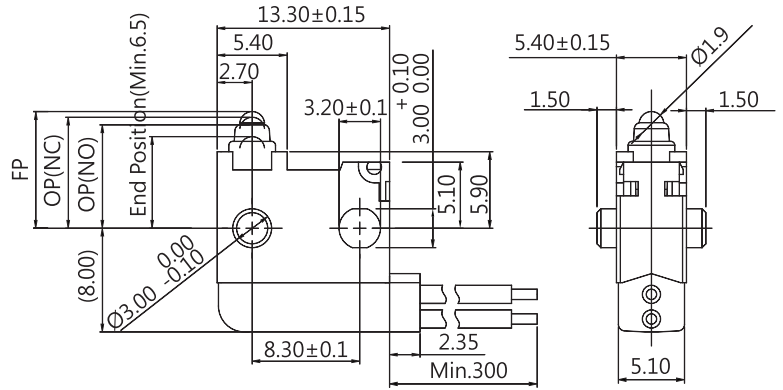


# WATER PROOF SWITCHES

## DIMENSIONS

Unless otherwise specified, a tolerance of  $\pm 0.4\text{mm}$  applies to all dimensions



## DW3 (IP67) SERIES

### APPLICATION

- Automobiles  
(detection of door opening and closing and shift lever position, etc.)
- Household appliances  
(propane stoves, vacuum cleaners, air conditioners Washing machines, etc.)

### ORDERING INFORMATION

D	W	3	-	G	1	S	-	00	A	0	-	M	F	001	A	-	Z
SERIES PREFIX	CODE	RATING CURRENT	CODE	OPERATING FORCE	CODE	ACTUATOR TYPE	CODE	PILLAR TYPE	CODE	CIRCUIT ARRANGEMENT	CODE	AWG TYPE	CODE	UL NUMBER	SERIAL CODE	SPECIAL CODE	ROHS CODE
	P1	0.1A 30VDC 0.05A 16VDC 0.001A 5VDC Contact Plated Silver	S	STANDARD	00		A		0	S.P.D.T	M	0.3mm <sup>2</sup>	F	AVSS			
	G1	0.1A 30VDC 0.05A 16VDC 0.001A 5VDC Contact Plated Gold			A01		D		1	S.P.S.T-NO							
									2	S.P.D.T-NC							

NOTE: S.P.D.T only for bottom side

CODE	DIMENSIONS						
	L1	H	ØA	ØB	ØC	ØD	P
A	1.5	5.9	3.0	HOLE 3.2	HOLE 3.0	N/A	8.3
C	1.5	5.9	3.0	3.0	N/A	N/A	8.3

**CAUTIONS:**

## 注意事項

1. To secure the switch, please use an M3 small screw on a flat surface and tighten with plane washers or spring washers to securely mount the Switch, using a maximum torque of 0.29 N•m.  
若使用定位孔型式上蓋，請使用M3小型螺絲固定在平面上，並使用平墊圈或者彈性墊圈以便安全的鎖固開關，鎖固扭力請勿超過0.29 N•m.
2. Do not handle the switch in a way that may cause damage to the sealed rubber & switch sealing.  
使用開關時，請勿損壞開關防水矽膠罩及開關防水膠。
3. Wires should not be dragged.  
使用帶線型式時，請注意避免拉扯線材。
4. To ensure the best performance of the switch, when handling/installing the switch, please do not apply uneven pressure to the direction indicated by the arrow in Figure 1. Any uneven pressure or pressure direction other than the operating direction might be harmful or damage the switch performance.  
為確保開關正常運作，安裝及取用開關時，請勿直接施加壓力在圖-1中箭頭所指示的方向。如圖所示，任何不對稱的壓力或作動方向以外的壓力都不適用在開關按柄上。
5. Avoid applying any grease/oil and chemicals on the switch rubber.  
請避免沾附任何油脂或者化學物質在開關的矽膠防水罩上。

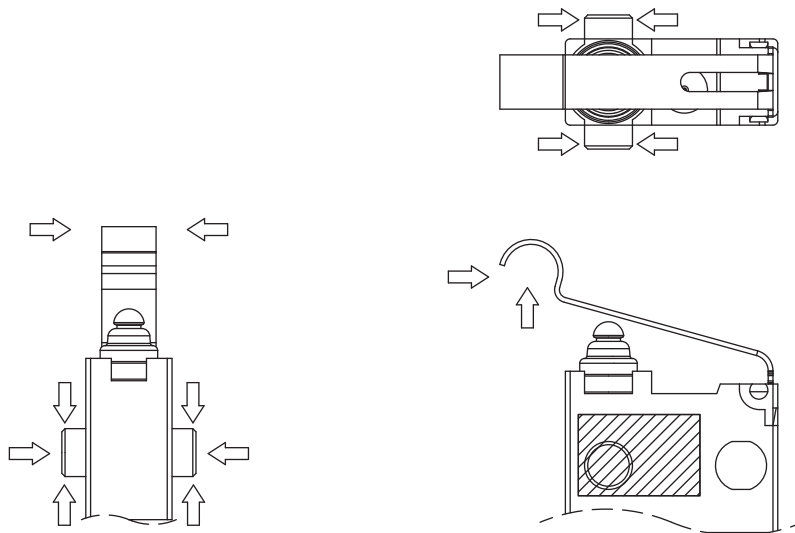


Figure-1