

WATER PROOF SWITCHES



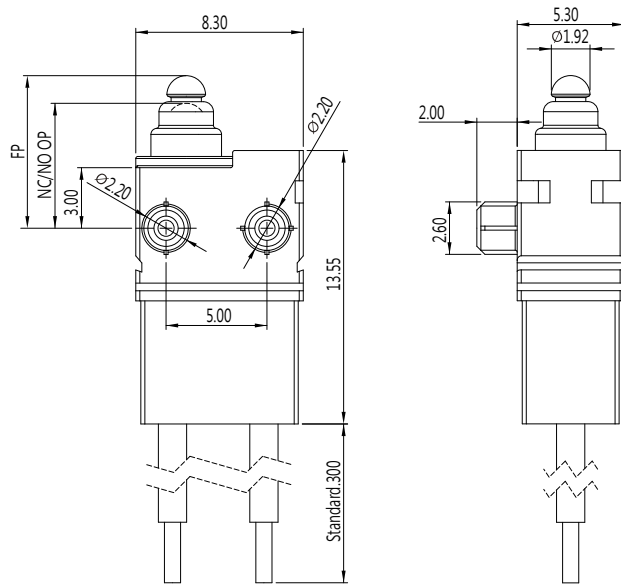
DW32(IP67) SERIES

APPLICATIONS

- Automobiles
(detection of door opening and closing and shift lever position, etc.)
- Household appliances
(propane stoves, vacuum cleaners, air conditioners Washing machines, etc.)

DIMENSIONS

Unless otherwise specified, a tolerance of $\pm 0.4\text{mm}$ applies to all dimensions.



ORDERING INFORMATION

DW32	P1	H	00	A	1	M	F	001	A	Z																
SERIES PREFIX	CODE	CODE	CODE	CODE	CODE	CODE	CODE	SPECIAL CODE	SPECIAL CODE	ROHS CODE																
	RATING CURRENT	OPERATING FORCE	ACTUATOR TYPE	PILLAR TYPE	CIRCUIT ARRANGEMENT	AWG TYPE	UL NUMBER																			
	50mA 16VDC 100mA 12VDC 1mA 5VDC Contact Plated Silver	H STANDARD	00 01	A	1 S.P.S.T-NO. 2 S.P.S.T-NC.	M 0.3mm ² G 24AWG	F AVSS A UL 1007																			
			 					 	<table border="1"> <thead> <tr> <th>CODE</th> <th>L1</th> <th>H</th> <th>A</th> <th>B</th> <th>C</th> <th>D</th> <th>P</th> </tr> </thead> <tbody> <tr> <td>A</td> <td>2.0</td> <td>3.85</td> <td>$\phi 2.2$</td> <td>$\phi 2.2$</td> <td>2.6</td> <td>2.6</td> <td>5.0</td> </tr> </tbody> </table>		CODE	L1	H	A	B	C	D	P	A	2.0	3.85	$\phi 2.2$	$\phi 2.2$	2.6	2.6	5.0
CODE	L1	H	A	B	C	D	P																			
A	2.0	3.85	$\phi 2.2$	$\phi 2.2$	2.6	2.6	5.0																			

WATER PROOF SWITCHES