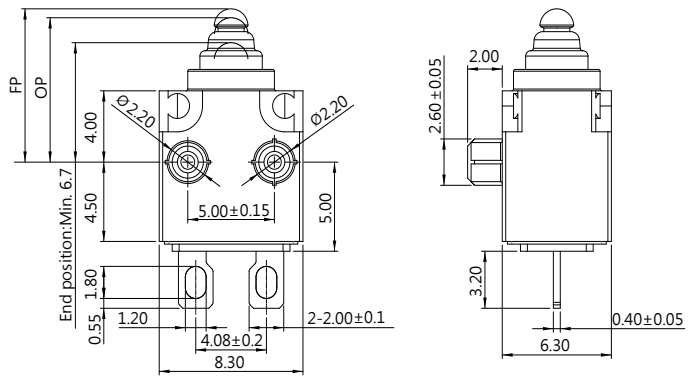


WATER PROOF SWITCHES



DIMENSIONS

Unless otherwise specified, a tolerance of $\pm 0.4\text{mm}$ applies to all dimensions



DW36 SERIES

SPECIFICATIONS

Contact Resistance (initial)

Max. 100m Ω

Measured by ohm meter –Open Voltage < 1VDC, Driver current -100mA

Insulation Resistance (at 500VDC/minute)

Min. 100M Ω

Dielectric Strength

Min. 500VAC(50-60HZ)/minute between Live parts.

Operating Temperature Range

-40°C to 85°C (with no icing)

Vibration

10~55Hz, displacement 0.75 mm (p-p)

Electrical Service Life

5A 12VDC - Min. 200,000 operations

3A 12VDC - Min. 500,000 operations

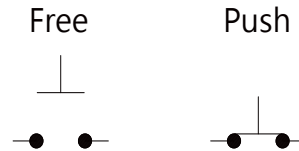
Electrical Operating Frequency

10~30 operations per minute

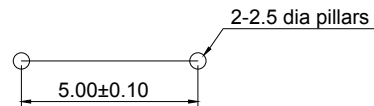
Degree of Protection

IP67 (excluding the terminals on terminal models)

CONTACT CONFIGURATION



PILLAR PITCH



APPLICATION

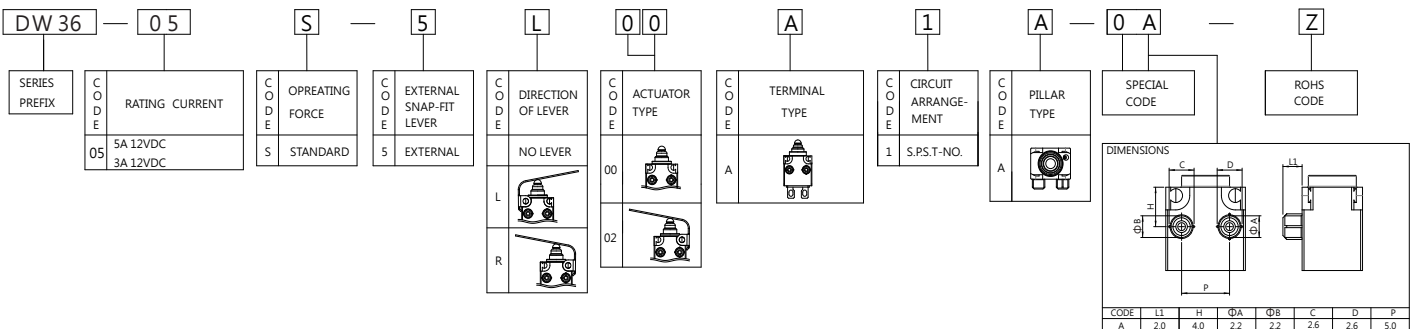
Automobiles

(detection of door opening and closing and shift lever position, etc.)

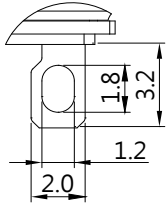
Household appliances

(propane stoves, vacuum cleaners, air conditioners Washing machines, etc.)

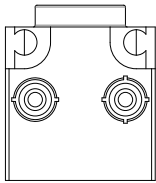
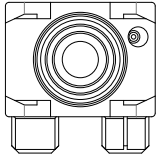
ORDERING INFORMATION



TERMINAL TYPES(THE thickness of each terminal is 0.4 mm)

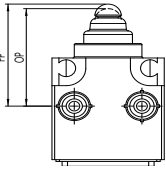
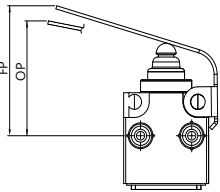


COVER TYPES (PILLAR & TRAVEL TYPES)



TYPE A

OPERATING CHARACTERISTICS

| SWITCH TYPE | PART SUFFIX | OF Max(gf) | FP Max (mm) | OP (mm) | OT Ref.(mm) |
|---------------------|---|------------|---------------|-----------|---------------|
| DW36-05S-500 □□ -Z |  | 122 | 8.7 | 8.0±0.25 | 1.75 |
| DW36-05S-5R02 □□ -Z |  | 35 | 12.5 | 9.9±1.00 | 5.25 |

CAUTIONS:

注意事項

1. Do not handle the switch in a way that may cause damage to the sealed rubber & switch sealing.
使用開關時，請勿損壞開關防水矽膠罩及開關防水膠。
2. Wires should not be dragged.
使用帶線型式，請注意避免拉扯線材。
3. To ensure the best performance of the switch, when handling/installing the switch, please do not apply uneven pressure to the direction indicated by the arrow in Figure 1. Any uneven pressure or pressure direction other than the operating direction might be harmful or damage the switch performance.
為確保開關正常運作，安裝及取用開關時，請勿直接施加壓力在圖-1中箭頭所指示的方向。如圖所示，任何不對稱的壓力或作動方向以外的壓力都不適用在開關按柄上。
4. Do not exceed the end position (EP) and over travel (OT). This could cause operation failure. (Figure-2)
圖示設計按壓位置，請勿超過開關下死點及超出行程，以避免開關失效。(圖2)
5. Avoid applying any grease/oil and chemicals on the switch rubber.
請避免沾附任何油脂或者化學物質在開關的矽膠防水罩上。
6. Allowable operating speed : 30 – 500 mm/sec
允許的操作速率: 30 – 500 mm/sec

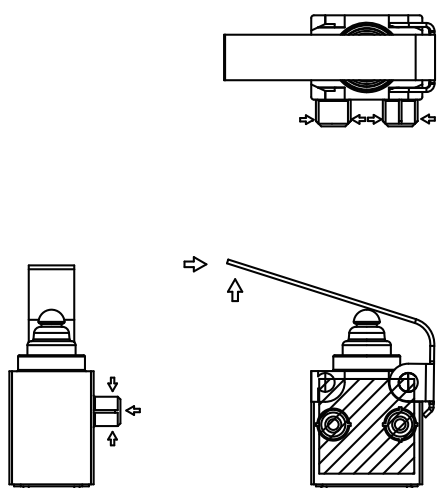


Figure-1

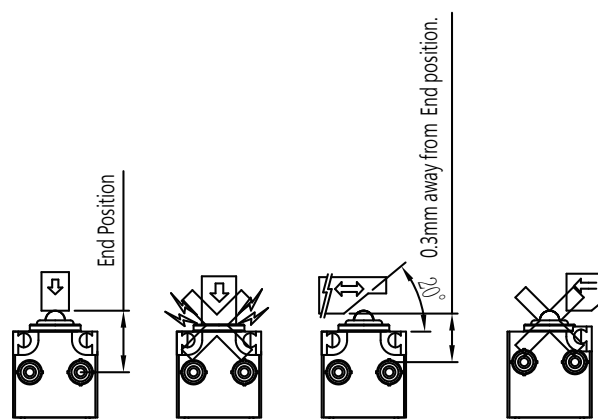


Figure-2