

# ROCKER SWITCH MR5 & MR5-R SERIES



## RATING

- 6A 125VAC, 3A 250VAC (UL,CUL)
- 3A~250VAC  $\mu$ T100/55 (VDE ENEC, CQC)
- 3A~250VAC T100/55 (KC)
- Initial contact resistance: 20m Ohms max
- Insulation resistance: 100M Ohms min. at 500VDC
- Dielectric strength: 1000 VAC (UL),3000VAC (VDE) 1min
- Electrical life: 6000 (UL); 10000 (VDE) cycles

## FEATURES

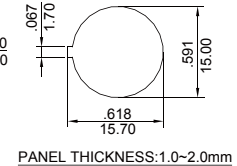
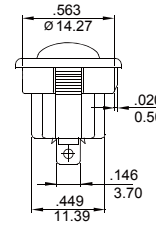
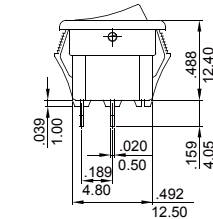
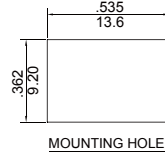
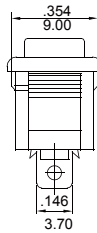
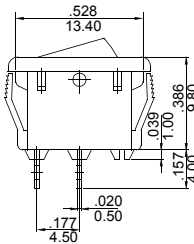
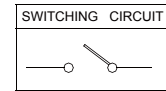
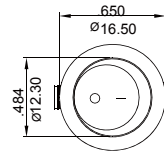
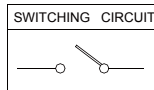
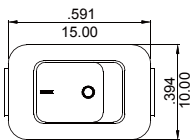
- Smallest AC rocker switch with highest rating in the market
- Appealing and patent outlook
- Safety approved internationally by UL&CUL in North America, VDE & ENEC in Europe, CQC & KC in Asia
- 9.2x13.6mm rectangle and dia.15mm round snap-in cutout size
- SPST, SPDT
- Meeting IEC60335-1 glow wire test ( $750^{\circ}\text{C} \leq 2\text{SEC}$ )

MR5 — 1 1 0 — F 2 — B B X

SERIES SYMBOL	POLE	FUNCTION	TERMINAL TYPE	ACTUATOR TYPE	MARKING TYPE	ILLUMINATED TYPE	BASE COLOR	ACTUATOR COLOR	SUFFIXES
MR5 SERIES	1 SINGLE POLE	1 ON-OFF 2 ON-ON 4 (ON)-OFF	0 SOLDER TAG	F FLAT R ROUND	1 HI LO 2 NO MARKING 3 ON OFF 4 ○   5 ○ —	L ILLUMINATED N NO ILLUMINATED ROUND TYPE <input type="checkbox"/> NO ILLUMINATED TYPE	B BLACK W WHITE A GRAY	B BLACK A GRAY W WHITE *R RED *G GREEN	BLANK NUMBER OR LETTERS

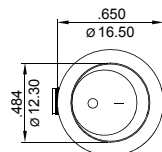
### Note:

1. "\*" can apply to PC material, illuminated type for round type and function ON-OFF only.
2. Suffixes (X): Custom code
3. The products options may be too many to be listed fully above, kindly consult our sales for further information.

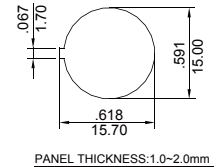
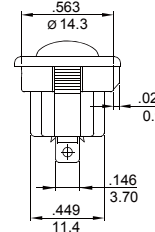
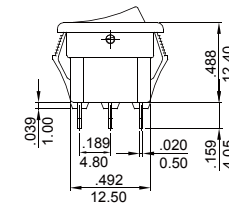


MR5-110-F5-XXX

MR5-110-R5N-XXX



SPST  
Pole on/off illuminated



MR5-110-R5L-XXX

