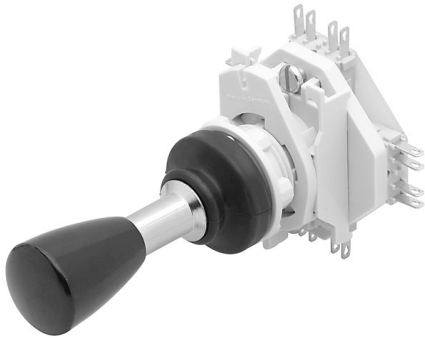


# EAO – Your Expert Partner for Human Machine Interfaces

## 44-800.4 - Lever switch complete

### 44-800.4 - Lever switch complete



*Attention: The preview is based on a sample product. This can differ from your current configuration.*

#### Mounting

Mounting cut-out  
Design  $\varnothing$  22.5 mm  
raised

#### Front

Front shape round  
Front dimension  $\varnothing$  22 mm

#### Other Attributes

Weight 0.085 kg

#### Operating-/Indication part

Lever colour black  
Lever material Plastic

#### IP-Rating

Front protection IP 65

#### Connection Method

Terminal Solder 2.8 x 0.5 mm

#### Actuator

Switching action Momentary

#### Switching element

Switching voltage 250 V AC  
Switching current 5 A  
Contacts 4 NC + 4 NO  
Switching system Snap-action switching element  
Contact material Gold

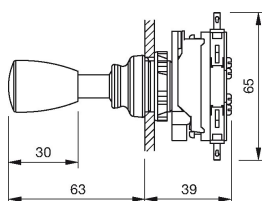
#### Function

Lever switch

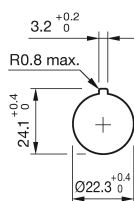
# EAO – Your Expert Partner for Human Machine Interfaces

## 44-800.4 - Lever switch complete

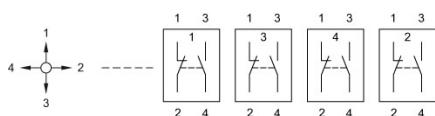
### Dimensions



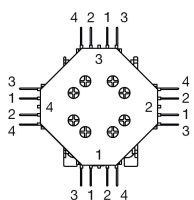
### Mounting cut-outs



### Wiring diagram



### Component layout



### Additional information

4 positions without latch position

With flat receptacle, VDE 0630 (SEV) specify use of insulating sleeve Part No. 280-0010-00

### Legend

Contacts: NC = Normally closed, NO = Normally open

Switching action: B = Momentary